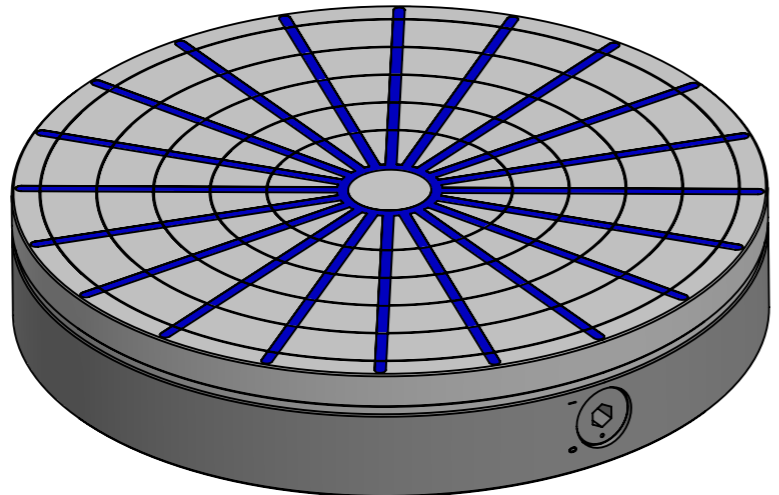
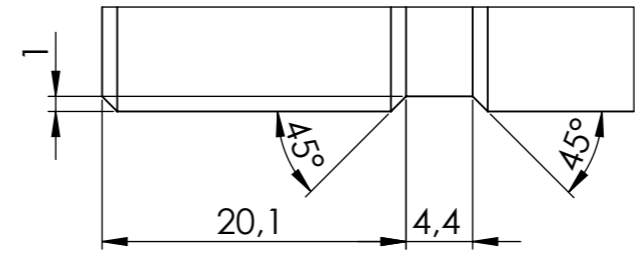


8 x $\phi 6,8 \pm 0,22$
M8 - 6H $\pm 0,16$

DETAIL A
2:1



Schutzvermerk nach DIN ISO 16016 beachten! Nachdruck nur mit unserer Genehmigung!		tolerance		material:	weight: 75.00
All rights reserved according to DIN ISO 16016! Reprint with our permission only!		ISO 7168 M		drawing no.: 0024211	
date		name		description: RS 40 Magnetrundfutter	
drawn 27.03.2024		TW			
appr. 27.03.2024		TW			
		FLAIG Magnetsysteme www.flraig-te.de		part no.: 210340	
rev.		change		sheet 1 / 2	
date		name		A3	
				scale: 1:3.5	
				Status: Freigegeben	

Maximum drill depth= 40mm

Maximum drill depth= 30mm

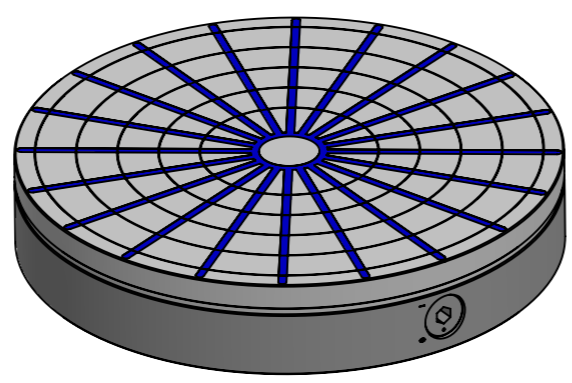
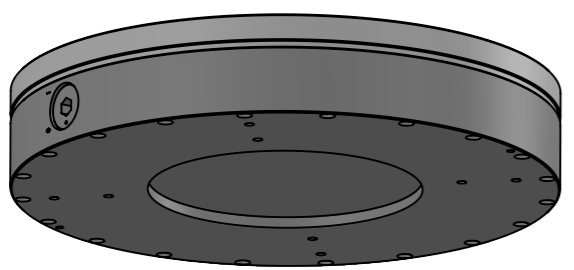
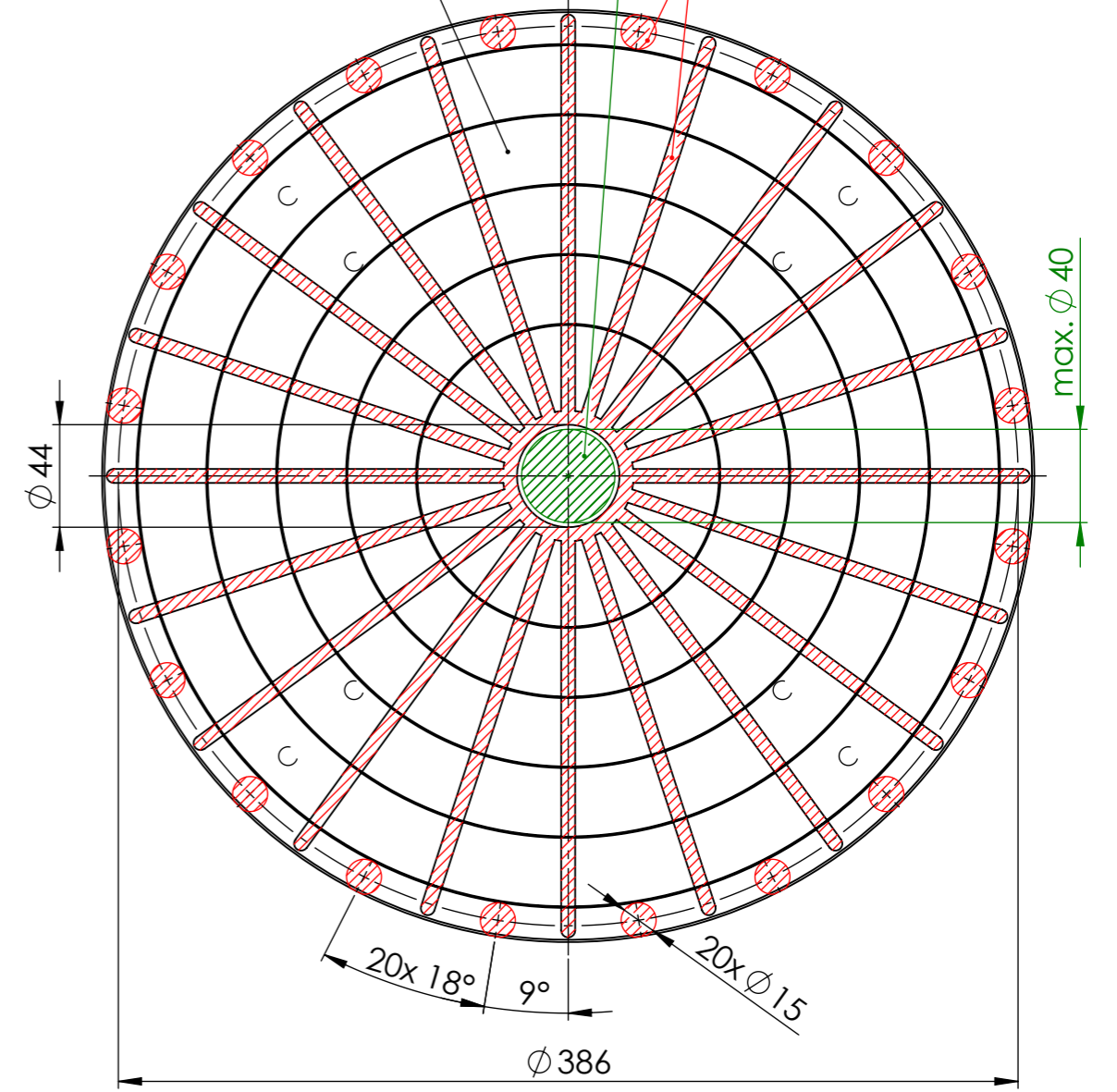
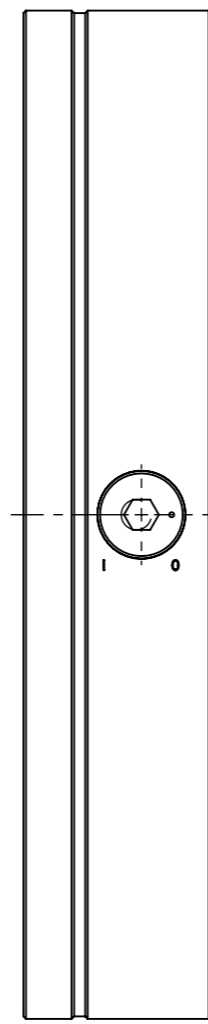
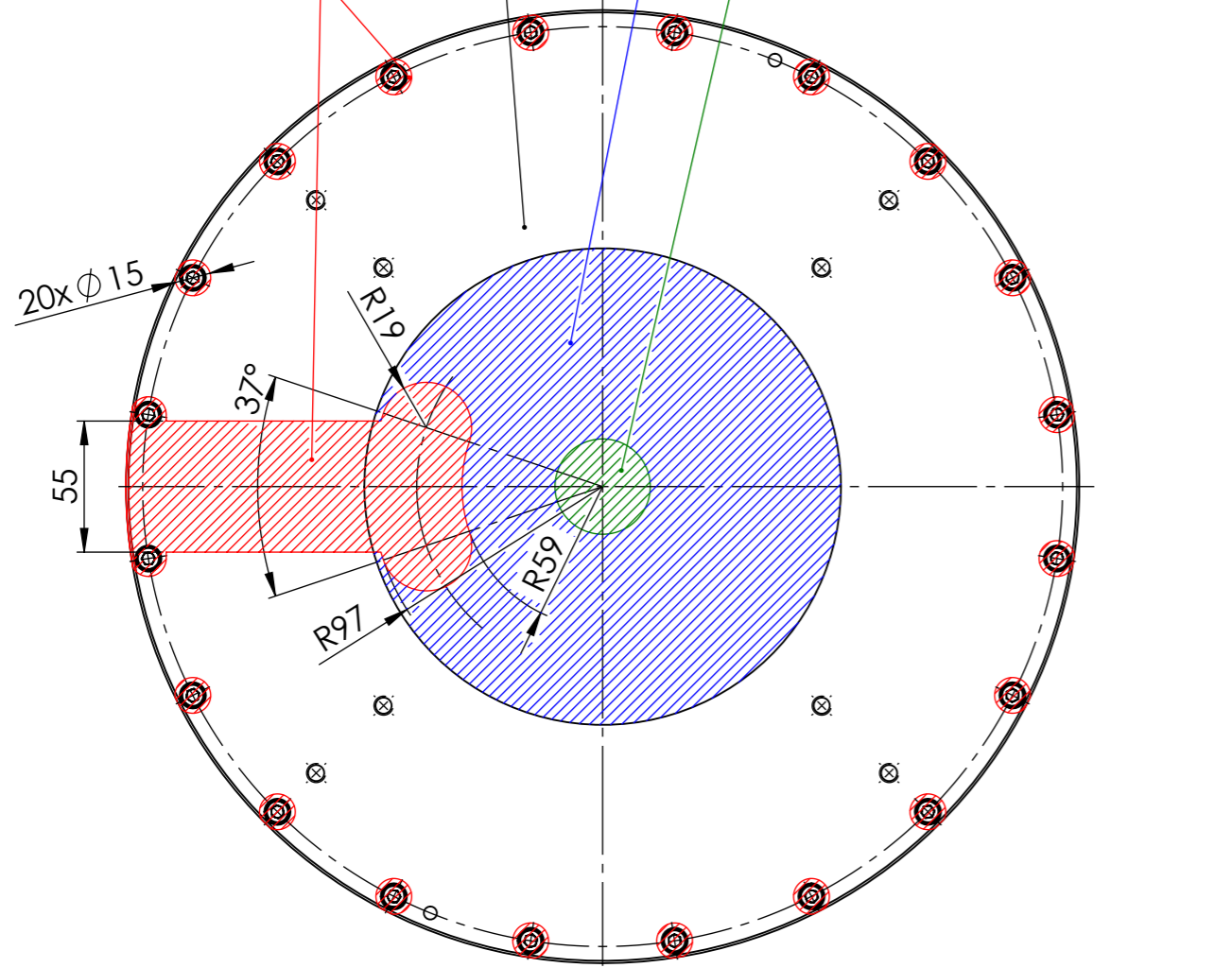
Maximum drill depth= Through

NO DRILL ZONES!!!

Maximum drill depth= Through

Maximum drill depth= 15mm

NO DRILL ZONES!!!



Schutzvermerk nach DIN ISO 16016 beachten! Nachdruck nur mit unserer Genehmigung!						tolerance	material:	weight: 75.00
All rights reserved according to DIN ISO 16016! Reprint with our permission only!						ISO 7168 M	drawing no.:	0024211
				date	name	description: RS 40 Magnetrundfutter		
				drawn 27.03.2024	TW			
				edit 27.03.2024				
				appr. 27.03.2024	TW			
 www.flraig-te.de						part no.:	sheet 2 / 2	
						210340		A3
rev.	change	date	name			scale: 1:3	Status: Freigegeben	